

Gaseous NO, NO₂, and NH₃ Loss during Cattle Feedlot Manure Composting

Xiying Hao* and Chi Chang

Key words: NO, NO₂, NH₃, air concentration, composting, cattle manure

ABSTRACT

The emission of NH₃ and NO_x gases during feedlot manure composting reduces the agronomic value of final compost as a soil amendment. In addition, NO_x gases cause air smog and deplete stratospheric ozone. The effect of passive aeration treatment (no turning) and active aeration treatment (turned 6 times) on NH₃ and NO_x emission during composting of feedlot manure was investigated in open windrows in summer 1997. The atmospheric concentrations of NH₃, NO and NO₂ at the windrow surface and 50 cm above were monitored throughout the composting period (99 days). Composting increased the atmospheric concentration of NH₃ and NO, while NO₂ was not affected. The atmospheric NH₃ concentration was higher during early composting and decreased with the composting period for both aeration treatments. Active aeration resulted in a much higher early NH₃ concentration (5500 ppb) than passive aeration (1000 ppb) at the windrow surface, but there was little difference later in the composting. The lower NH₃ loss for the passive aeration treatment is consistent with the higher N retained in the compost at the end of the experiment. The atmospheric NO concentration increased up to 350 ppb at the surface of the passive aeration windrow during early composting, then decreased to much lower values (< 50 ppb) around day 50 and stayed low for the rest of composting period. Similar NO atmospheric concentration patterns were observed for the active aeration treatment, but the early NO concentration was much lower. Since the decomposition of manure/compost materials was incomplete for the passive aeration treatment, further studies are needed to investigate possible techniques to reduce NH₃ and NO losses (retaining more N in the finishing compost) while increasing the composting rate.

INTRODUCTION

Livestock production in southern Alberta has experienced major changes in recent years and cattle feedlots of 10,000 head and larger are now common (Lethbridge County 1998). Associated with the increased intensity of livestock operations is the increased amount of feedlot manure produced each year. Proper utilization of manure is crucial to the long-term sustainability of feedlot operations. Traditionally, cattle manure is directly applied to nearby fields. However, this has created concern over environmental issues such as nitrate leaching to the groundwater (Chang & Janzen 1996).

The composting of feedlot manure has been proposed as an alternative to direct land application. Composting produces a stabilized product that can be stored or spread on land with little or no odor, pathogens, weed seeds, or fly breeding potential (Rynk & al. 1992). Compost may also be trucked further distances since composting significantly reduces volume and mass (Larney & al. 2000).

Composting is a biological process in which organic matter is transformed into humus-like materials. But this process also releases various gaseous N compounds into the atmosphere, reducing the agronomic value of compost as a soil amendment and

creating possible environmental concerns as well. Nitrous oxide emission from manure has been reported during composting (Hellmann & al. 1997; Hao & al. 2000), storage (Brown & al. 2000; Petersen & al. 1998) and after application to agricultural land (Chang & al. 1998). Gaseous NH_3 loss has been reported during composting of sewage sludge (Witter & Lopez-Real 1988), liquid manure (Martines & Dewes 1992), and poultry manure (Kirchmann & Witter 1989; Kithome & al. 1999). Although most N emitted is in the form of NH_3 , we cannot neglect N losses in the form of NO and NO_2 since they may contribute to acid rain formation, photochemical smog generation and ozone depletion. The objective of this study is to investigate how aeration methods used during cattle feedlot manure composting affect atmospheric NH_3 , NO and NO_2 concentrations.

MATERIALS AND METHODS

On 20 May 1997, windrows were set up for summer composting of cattle feedlot manure at the Agricultural and Agri-Food Canada Research Centre in Lethbridge, Alberta. The manure contained wheat straw as the bedding material. Some physical and chemical characteristics of the manure used are shown in Table 1 (Larney & al. 1999).

Table 1. Characteristics of the feedlot manure used

Moisture	pH	EC	$\text{NH}_4^+\text{-N}$	$\text{NO}_3^-\text{-N}$	$\text{NO}_2^-\text{-N}$	Total C	Total N	Total P	C/N
g kg^{-1}		dS m^{-1}	mg kg^{-1}				g kg^{-1}		
2389.8	7.6	7.5	2150	2.3	5.0	342	17.7	2.48	19.3

Both active and passive aeration windrows were constructed, each with three replications. Each windrow covered an area of about 50 m^2 (3.6 by 14 m) and was 1.4 to 1.6 m high. The wet and dry weights of each windrow were determined at the beginning and end of composting. For the active aeration treatment, the manure in the windrow was turned six times (day 14, 21, 29, 50, 70 and 84) during the 99-day thermophilic composting period.

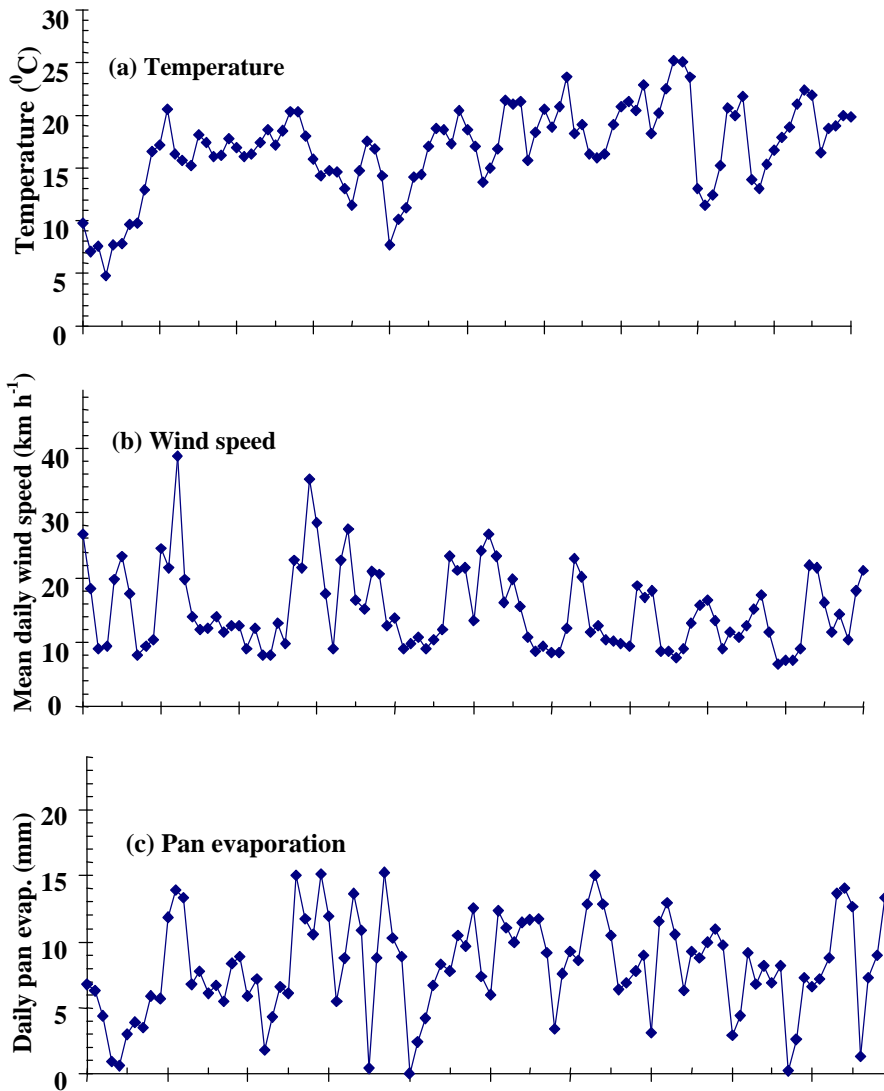
For the passive aeration treatment, the windrows were never turned. Air was introduced into the windrows by a series of open-ended perforated steel pipes (10 cm diam.). Pipes were placed 45 cm apart on a 15 cm deep layer of cured compost. The manure was placed over the pipes, ensuring that the ends were not covered. The windrows were also covered with a 15 cm thick blanket of cured compost to reduce ammonia loss. On day 99, material from each treatment was moved into curing piles. Details on the physical changes that occurred during composting (Larney & al. 2000) and on greenhouse gas emissions (Hao & al. 2000) have been published elsewhere.

Air temperature, wind speed, pan evaporation and precipitation data were collected at the Lethbridge Research Centre weather station less than 200 m from the compost windrows. The concentration of NH_3 , NO and NO_2 at the compost windrow surface and 50 cm above each windrow were monitored throughout the composting period using a chemiluminescent NH_3 analyzer (Model 17, Thermo Environments Instruments). Approximately 6 readings were obtained each day for each windrow.

RESULTS AND DISCUSSION

Environmental Conditions

Mean daily temperatures were close to normal for the composting period, between 10 and 25°C, except in the first week where mean air temperatures were 5 to 10°C (Fig. 1a).



Daily mean wind speeds varied substantially and went as high as 40 km h⁻¹ (Fig. 1b). The mean daily pan evaporation varied from close to zero to as high as 15 mm, with the high evaporation values generally occurring when wind speed or air temperature were high (Fig. 1c). Most precipitation (75%) occurred in the first 40 days of composting (Fig. 1d).

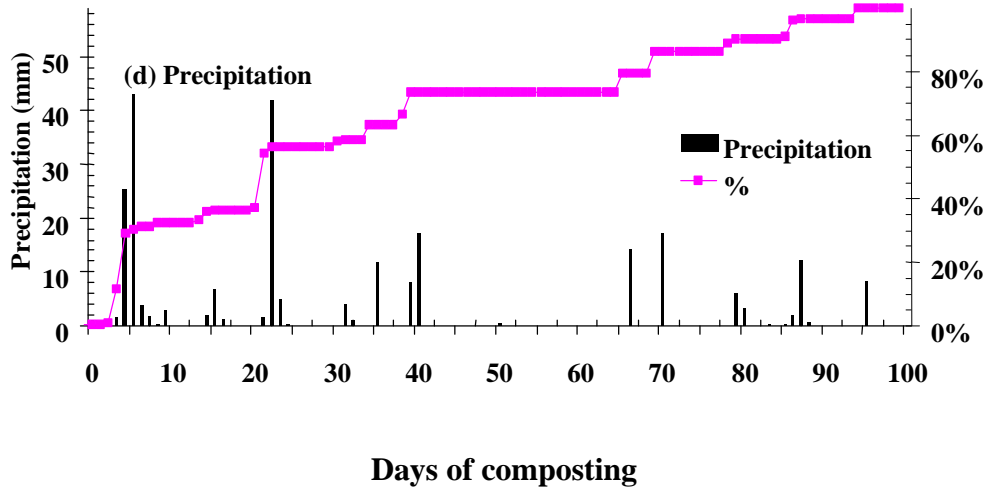
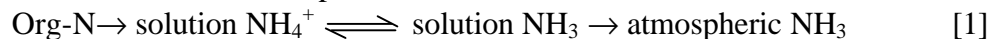


Fig. 1. Weather conditions during composting period

Daily emission pattern of NO, NO₂ and NH₃

The atmospheric concentration of NH₃, NO and NO₂ at the composting windrow surface followed distinct daily patterns (Fig. 2). The atmospheric NH₃ concentration (Fig. 2b) showed a similar pattern to the air temperature (Fig. 2a), with the maximum occurring in early afternoon and minimum after mid-night each day. The daily patterns for NO and NO₂ were more complicated, affected by wind speed in addition to temperatures (Fig. 2c & 2d). The measured atmospheric NO and NO₂ concentrations were low whenever wind speeds were high. The large intra-day fluctuations demonstrate the need to take several readings each day, rather than relying on a single measurement to be representative.

The observed NH₃, NO and NO₂ patterns reflect the rate of their emission from the compost windrow surface and how fast they are being moved away from the emitting surfaces. As with any gas, the emission rate depends on its concentration at the emitting surface and how much of the gas is being produced and transported to the surface. The peaks of NH₃, NO and NO₂ reflect the higher rate of production and diffusion at higher temperatures. The rate of NH₃ production is described in [1]:



The emission of NH₃ is also affected by the rate of water evaporation since NH₃ is highly soluble in water. An increase in temperature also leads to an increase in volatilization of NH₃, as there is less water in the compost to hold the NH₃.

The measured NH₃, NO and NO₂ atmospheric concentrations are also affected by how fast these gases move away from the emitting surface. A higher wind speed means

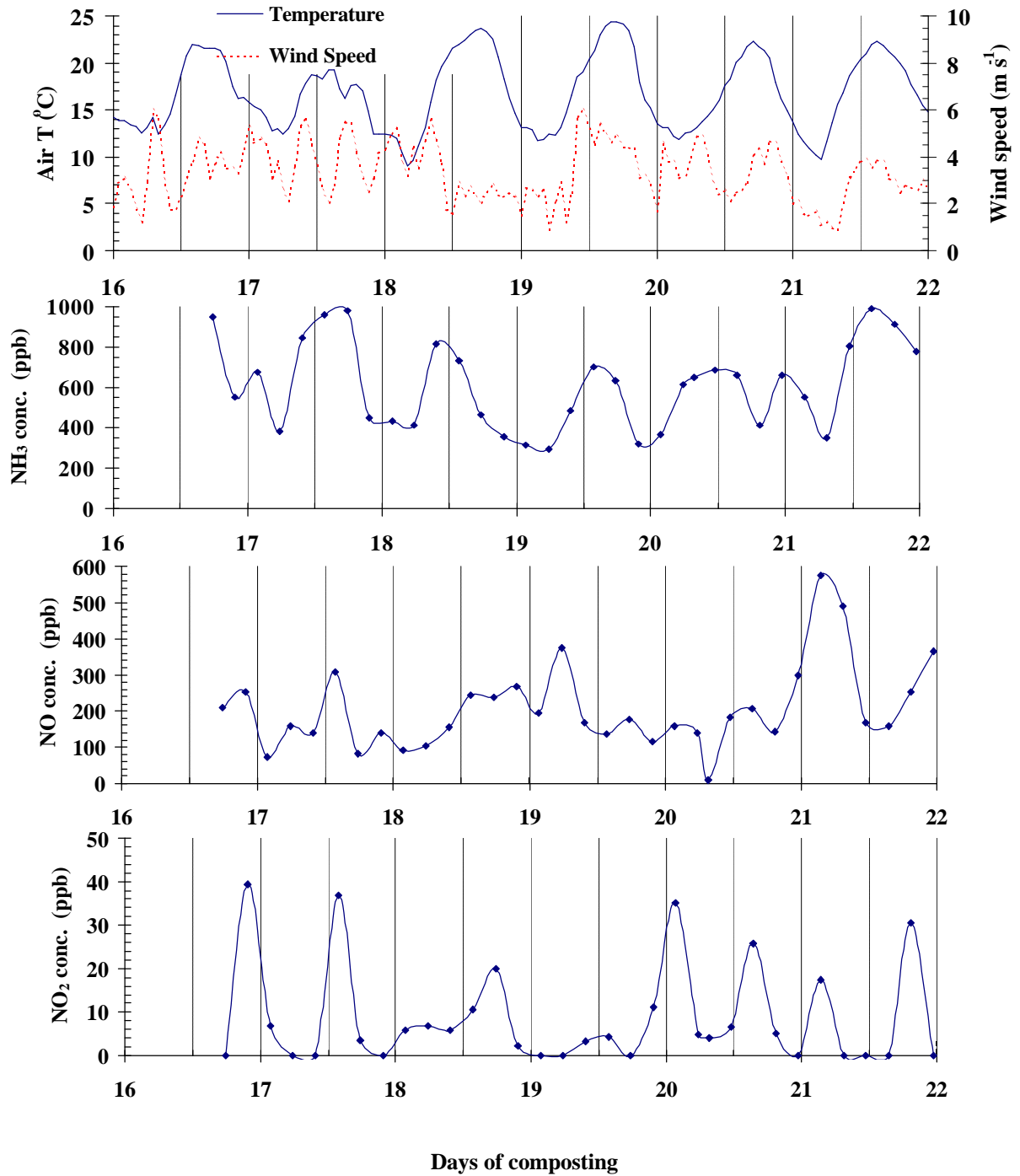


Fig. 2. Daily patterns of atmospheric NO, NO₂ and NH₃ concentration during early composting (at passive aeration windrow surface).

more gases move away from the emitting surface, leaving a lower concentration of NH_3 , NO and NO_2 to be detected.

Effect of passive aeration treatment on NH_3 , NO and NO_2

The release of NH_3 , NO and NO_2 from the compost windrows increases their atmospheric concentration (Fig. 3). The mean daily NH_3 atmospheric concentrations were initially high (1000 ppb), but decreased with time and were less than 400 ppb around day 40 and stayed at 400 ppb for the rest of composting period (Fig. 3a). Since no wind speed data was collected at the windrow surface, it is impossible to calculate the amount of NH_3 lost from the compost. However, Fig. 3a clearly shows that NH_3 volatilization was probably the major source of N loss, especially during early composting. The NH_3 concentrations were generally higher at the surface than 50 cm above. A few exceptions were measurements taken just after turning the active aeration treatment, which released substantial amounts of NH_3 . Since the windrows were all less than 30 m apart, it is likely that some of the NH_3 released during active windrow turning had moved over the passive windrows.

The observed high NH_3 atmospheric concentrations near compost windrows during early composting were due to higher NH_4^+ (Table 2) and a higher temperature in the compost that favors NH_3 volatilization. The higher organic matter decomposition rate during early composting also led to more organic N being converted into NH_4^+ . As composting progressed, NH_4^+ concentration decreased as result of the volatile NH_3 loss, slowing the rate of NH_4^+ production. Most fresh organic-N had been converted into NH_4^+ and humus near the surface. In addition, nitrification also reduced the amount of NH_4^+ in the compost windrows.

The mean daily atmospheric NO concentration at the windrow surface showed similar patterns to NH_3 , high during early composting (around 200 to 350 ppb) and decreasing with time to approximately 5 to 50 ppb towards the end of composting (Fig. 3b). The concentration of NO was also higher at the windrow surface than 50 cm above. The daily atmospheric NO_2 concentrations at the compost windrow surface varied between 5 and 16 ppb for the most of the composting period except on day 16 (22 ppb).

Nitric oxide and NO_2 can be formed from nitrification reactions, denitrification, chemo-denitrification or self-decomposition of nitrous acid (Remde & Conrad 1991; Smith & Chalk 1980). The initial high atmospheric NO concentration was probably due to a high nitrification rate, since the NH_4^+ concentration in the windrow was high. As the composting process progressed, NH_4^+ concentration decreased due to NH_3 volatilization loss and nitrification converting NH_4^+ into nitrate. Thus, the amount of NO produced by nitrification rapidly decreased. Chemo-denitrification and/or self-decomposition of nitrous acid also played a role in NO emission, since there was a considerable amount of NO_2^- (Table 2) and phenol and amine compounds in the manure/compost materials. Production of NO has been found to be correlated with NO_2^- concentration (Baumgartner & Conard 1992; Kester & al. 1997). Denitrification played a limited role in NO production, especially during early composting, since most nitrates ($\text{NO}_3^-/\text{NO}_2^-$) were produced near the surface (through nitrification) and were stable under aerobic conditions. Nitrate had to be leached to the anaerobic sites (near bottom of the windrow) by precipitation in order for NO to be produced during the denitrification process. Because manure/compost is a mosaic of aerobic and anaerobic zones, it is likely that

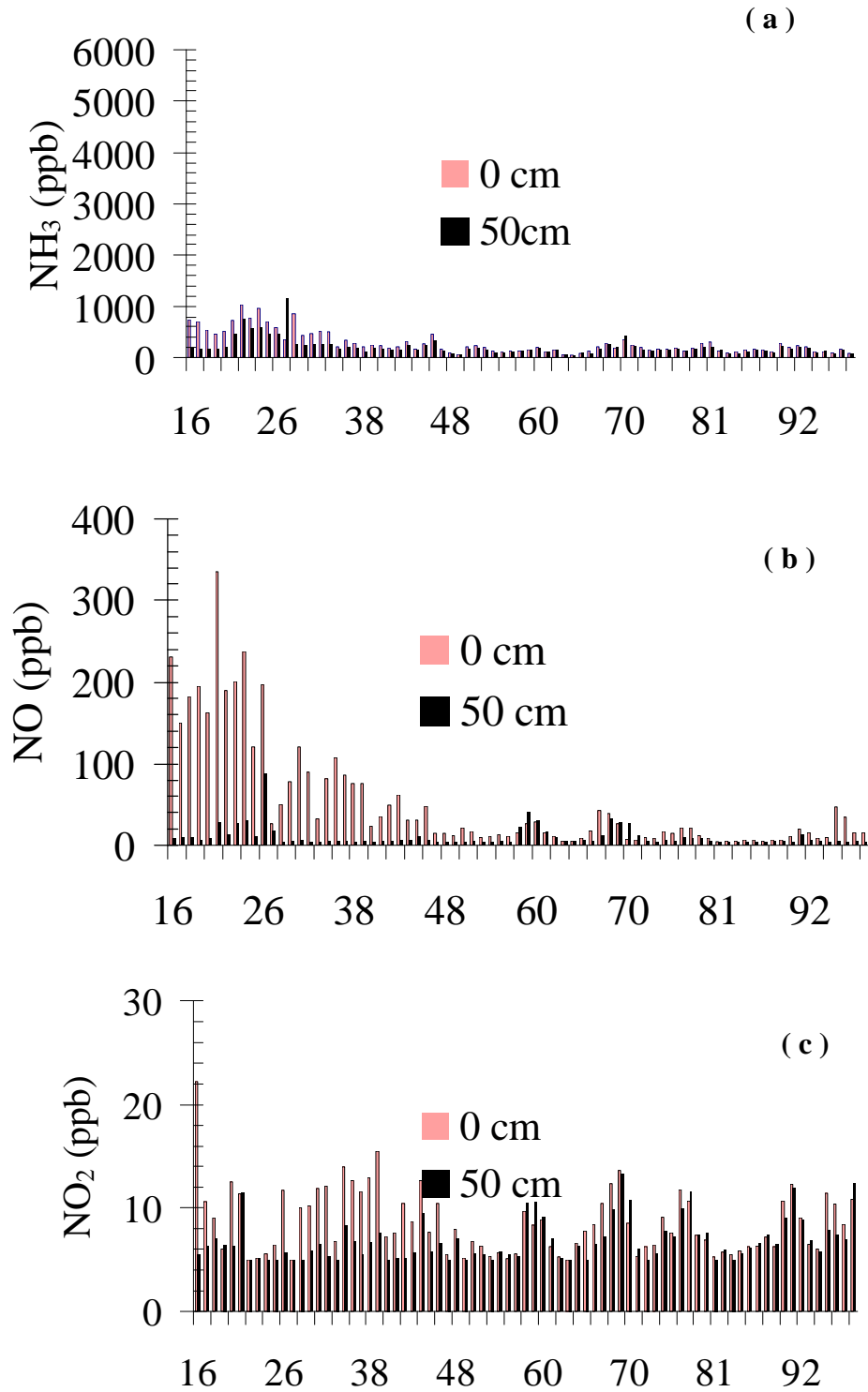


Fig. 3. Concentration of NH₃, NO and NO₂ at 0 and 50 cm above windrow surface under passive aeration treatment.

Table 2. NH_4^+ , NO_3^- , and NO_2^- changes during composting

Treatment	Passive ^a			Active		
	NH_4^+	NO_3^-	NO_2^-	NH_4^+	NO_3^-	NO_2^-
Sampling Time (day)			mg	kg^{-1}		
0	2150	2.1	4.0	2150	2.4	6.0
6	863.6	8.9	21.5	1530.0	1.2	3.1
21	701.5	4.6	17.0	1050.0	4.9	16.7
44	185.8	9.8	13.1	610.0	8.7	29.6
84	307.3	22.4	35.0	250.0	11.0	6.1
99	2451.9	20.6	21.4	50.0	18.8	7.1

^a: For passive treatment, sample taken on day 6, 21, 44 and 84 represents manure/compost materials at top one-third of windrow (as far as the sampling device goes) while day 0 and day 99 represents the average of whole windrow profile.

multiple processes were contributing simultaneously to NO production, but one might be more dominant than the others in composting windrows.

Slightly higher NO_2 values during early composting were probably due to the greater NO production and the oxidation of NO into NO_2 . Nitrogen dioxide values obtained at the surface were only slightly higher than those obtained 50 cm above the compost windrow, suggesting that composting was not the major contributor to NO_2 levels in the air (Fig. 3c). The NO_2 values obtained here were not much different from those observed in Calgary (a major city 200 km away, with NO_2 values from 17 to 29 ppb).

Effect of active aeration treatment on NH_3 , NO and NO_2

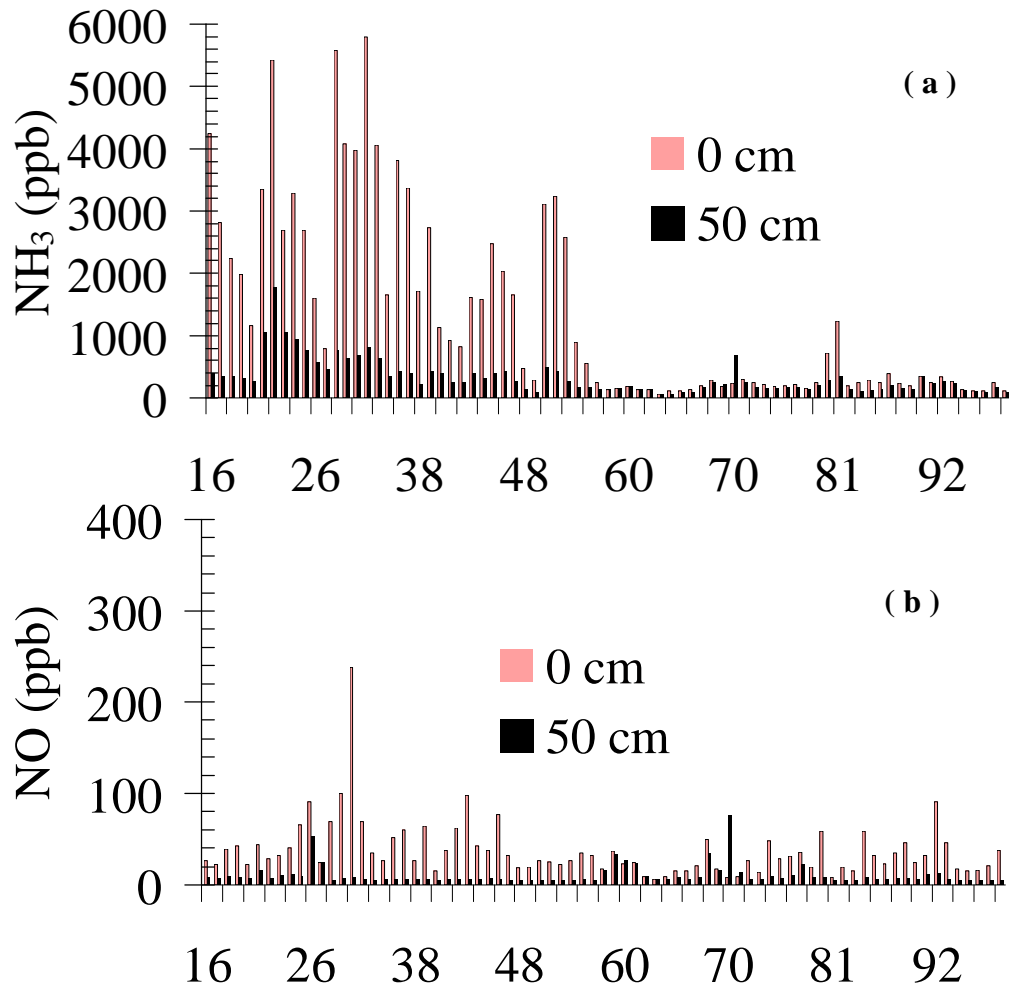
Atmospheric concentration of NH_3 , NO and NO_2 for the active aeration treatment (Fig. 4) followed similar patterns to the passive aeration treatment (Fig. 3). Ammonia volatilization from the composting manure was high during the first half of composting, reaching as high as 5800 ppb at the windrow surface (Fig. 4a). Volatilization then decreased to 200 to 400 ppb and stayed at between those levels for the second half of composting. Compared to the passive aeration treatment, the atmospheric NH_3 concentration was higher during early composting and increased when the windrow was turned. However, turning had very little effect after day 60.

The higher NH_3 atmospheric concentration above the active aeration treatment was due to the effect of windrow turning. Turning increases the rate of NH_3 diffusion to the emitting surface, the rate of NH_4^+ production and the re-distribution of mineral N (NO_3^- , NH_4^+) in the windrow profile. First, turning directly releases the atmospheric NH_3 trapped in the bottom of the windrow. Otherwise, NH_3 would take a much longer time to diffuse through the windrow profile. Second, turning decreases the water content of the manure/compost materials, so less NH_3 can be held in the manure/compost solution. Third, turning "fluffs" up the materials and increases both total and air-filled porosity. Higher air-filled porosity means a higher NH_3 gas diffusion rate and faster supply of NH_3 from the bottom to the emitting surface, resulting in a higher NH_3 emission.

As discussed earlier, the emission of NH_3 from the windrow surface is also affected by the concentration of NH_4^+ in the manure/compost solution. Turning also

affects the rate of NH_4^+ production and its distribution in the windrow. First, periodic turning increases the aeration status of the windrow, leading to a greater rate of decomposition and NH_4^+ production. Second, turning brings the less decomposed material from the bottom to the top at the same time as it moves well-decomposed materials to the bottom. This leads to a new round of decomposition and NH_4 production near the surface, where O_2 supply is plentiful, than at the bottom of the windrow. Third, turning also redistributes NH_4^+ from the bottom to the top of the windrow. The concentration of NH_4^+ is much higher at the bottom because the NH_4^+ produced during decomposition near the windrow surface is either volatilized to the atmosphere as NH_3 gas or converted to NO_3^- through a nitrification process under aerobic conditions. However, NH_4^+ is very stable at the bottom of the windrow where O_2 supply is limited. Thus, turning would move material rich in NH_4^+ from the bottom to the top and increase NH_3 emission.

The small difference in NH_3 atmospheric concentration between active and passive aeration treatments during late composting reflects similar $\text{NH}_4^+/\text{NH}_3$



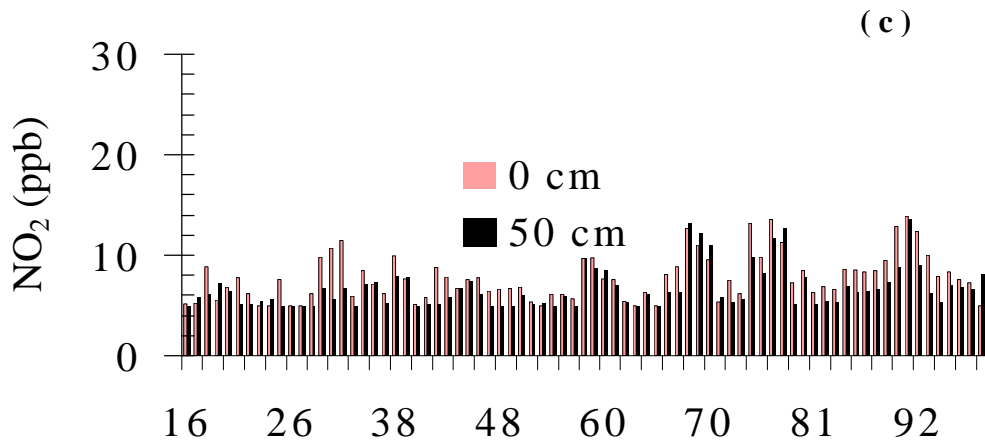


Fig. 4. Concentration of NH_3 , NO and NO_2 at 0 and 50 cm above windrow surface under active aeration treatment (arrows pointing to data of windrow turning).

concentrations near the evaporating surfaces of the windrows. However, the $\text{NH}_4^+/\text{NH}_3$ concentration would be much higher towards the bottom of the windrow, especially for the passive aeration treatment. Turning had little effect on atmospheric NH_3 concentration during late composting, probably reflecting a more uniform distribution of $\text{NH}_4^+/\text{NH}_3$ in the windrow profile for the active aeration treatment.

The cured compost cover for the passive aeration treatment also contributed to its low measured NH_3 atmospheric concentrations. The cured compost cover at the windrow surface could adsorb some of the volatilized NH_3 and the adsorbed NH_3 could be leached back into the windrow below with rainfall events. This reduces NH_3 volatilization, so the atmospheric concentration was below that of the active aeration treatment.

Similar to the passive aeration treatment, NO_2 varied between 5 and 14 ppb throughout the entire composting period (Fig. 4c) while the daily atmospheric NO concentration near the compost surface varied from 240 ppb during early composting to 10 ppb during later composting. A higher atmospheric concentration at the windrow surface than 50 cm above was also observed (Fig. 4b). However, NO concentration for the active aeration treatment was lower at the beginning and higher towards the end of composting than for the passive aeration treatment. The lower atmospheric concentration during early composting was probably related to the lower rate of nitrification, since a greater rate of NH_3 volatile loss (Fig. 4a) means less NH_4^+ is available for nitrification and NO production in the active aeration treatment. On the other hand, the higher atmospheric NO concentration during late composting was probably related to greater denitrification during later composting.

As discussed earlier, turning not only mixes the material, but effectively moves nitrate-rich material from top to bottom while moving NH_4^+ -rich materials from bottom to top. Besides starting a new round of NH_3 volatile loss, turning also increases NO production through nitrification near the surface and denitrification near the bottom. Thus, a higher NO atmospheric concentration for active aeration treatment was observed

in the second half of the composting. Denitrification played an increasing role since NO_3^- concentration increases as composting progresses.

The different atmospheric NH_3 , NO and NO_2 patterns observed for the two aeration treatments in this study were caused by the different composting conditions created by the two aeration treatments. The aeration treatment not only affects the rate of composting, but, more importantly, the nitrogen transformation and transport in the windrow profile, the gaseous N emission through the windrow surface and, finally, the NH_3 , NO and NO_2 atmospheric concentrations. The lower NH_3 emission was further confirmed by the high concentration of NH_4^+ retained in the passive aeration compost at the end. Since the manure had a narrower N to P ratio than most crops need, any N conserved during composting is a bonus. Supplementary N fertilizer is usually required if compost is applied to fields based on crop P need. However, decomposition was much lower under passive aeration and the materials still had the look of raw manure when the windrow was opened at day 99.

The relatively lower NO_2 atmospheric concentration for both treatments suggests that NO_2 production during composting of cattle feedlot manure is very limited. The high NO emission for passive aeration during early composting might be a concern and further study is needed to investigate possible methods to reduce NO and NH_3 emission during composting of cattle feedlot manure.

ACKNOWLEDGEMENT

Technical support from G. Travis, E. Naknechiney, B. Hill, and A. Olson is greatly appreciated.

REFERENCES

- Baumgartner M. & Conrad R. 1992. Role of nitrate and nitrite for production and consumption of nitric oxide during denitrification in soil. - *FEMS Microb. Ecol.* 101: 59-65.
- Chang C. & Janzen H.H. 1996. Long-term fate of nitrogen from annual feedlot manure applications. *J. Environ. Qual.* 25:785-790.
- Hao X., Chang C., Larney F.J. & Travis G.R. 2000. Greenhouse Gas Emissions during Cattle Feedlot Manure Composting. - *J. Environ. Qual.* (submitted)
- Hellmann B., Zelles L., Palojarvi A., & Bai Q. 1997. Emission of climate-relevant trace gases and succession of microbial communities during open-windrow composting. - *Appl. Environ. Microb.* 63: 1011-1018.
- Kester R.A., de Boer W., & Laanbroek H.J. 1997. Production of NO and N_2O by pure cultures of nitrifying and denitrifying bacteria during changes in aeration. - *Appl. Environ. Microb.* 63: 3972-3877.
- Kirchmann H., Witter E. 1989. Ammonia volatilization during aerobic and anaerobic manure decomposition. - *Plant Soil* 115: 35-41.
- Kithome M., Paul J.W, & Bomke A.A. 1999. Reducing nitrogen losses during simulated composting of poultry manure using adsorbents or chemical amendments. - *J. Environ. Qual.* 28: 194-201.
- Larney F.J., Chang C., & Blackshow R.E. 1999. Composting as a manure management alternative. Alberta Agriculture Research Institute Matching Grant Program Final Technical Report. Project No. 97M179.

- Larney F.J., Olsen A.F., Carcamo A.A., & Chang C. 2000. Physical changes during active and passive composting of beef feedlot manure in winter and summer. *Biores. Techn.* (In printing)
- Remde A. & Conrad R. 1991. Role of nitrification and denitrification for NO metabolism in soil. - *Biogeochemistry* 12: 189-205.
- Rynk R. 1992. *On-farm composting handbook*. Publ. NRAER-54, Northeast Regional Agricultural Engineering Service, Ithaca, NY. 186 pp.
- Smith, C.J. & Chalk F.E. 1980. Gaseous nitrogen evolution during nitrification of ammonia fertilizer and nitrite transformations in soil. - *Soil Sci. Soc. Am. J.* 44: 277-282.
- Witter E. & Lopez-Real J. 1988. Nitrogen losses during the composting of sewage sludge, and the effectiveness of clay soil, zeolite, and compost in adsorbing the volatilized ammonia. - *Biol. Wastes* 23: 279-294.